



# SCD100

OFL-4195-002

Duct CO<sub>2</sub> Transmitter 0–10 V and  
Temperature Sensor NTC 1.8/10 kohm

Installation Instruction

## INSTALLATION

### When Installing this Product

- 1 Study these instructions carefully. Failure to follow them could damage the product or cause a hazardous condition.
- 2 Check the ratings given in the instructions and on the product to make sure the product is suitable for your application.
- 3 Installer must be a trained, experienced service technician.

#### Important

- All low voltage connections to this device must be 24 VAC Class 2.
  - All wiring must comply with applicable local codes, ordinances and regulations.
- 4 After installation is complete, check out product operation as provided in these instructions.



### CAUTION

#### Health Hazard.

**Improper use can create dangerous situations.**

Use in application for sensing carbon dioxide only.

For life-safety applications, this device can function only as a secondary or lesser device.



### CAUTION

#### Electrical Shock or Equipment Damage Hazard.

**Can shock individuals or short equipment circuitry.**

Disconnect power supply before installation.



### CAUTION

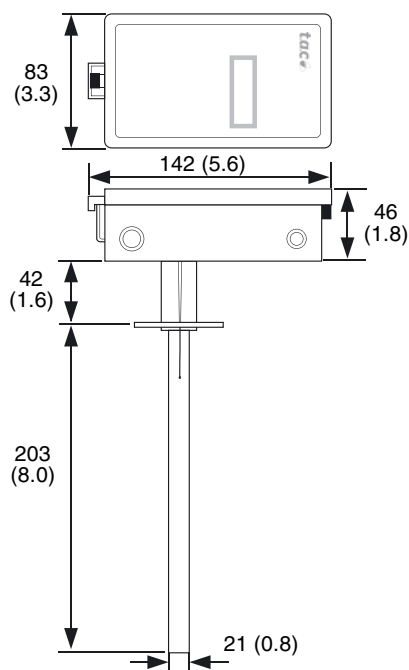
#### Equipment Damage Hazard

**Electrostatic discharge can short equipment circuitry.**

Ensure that you are properly grounded before handling the unit.

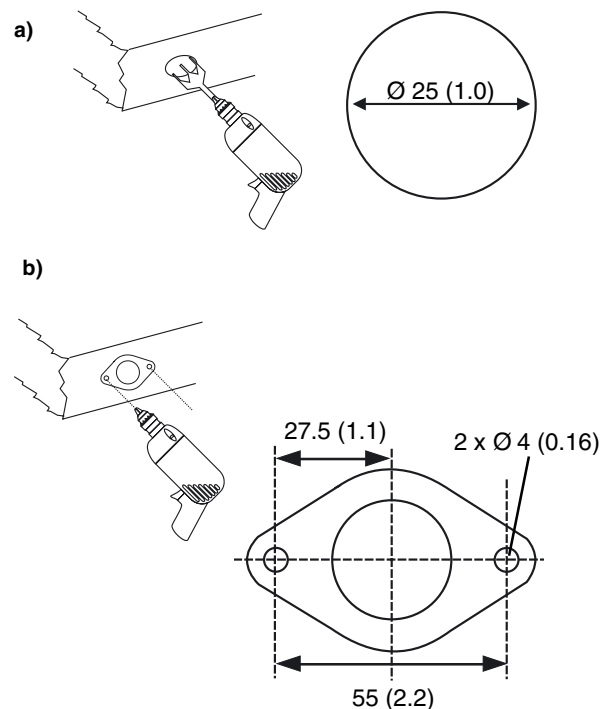
1

### Dimensions in mm (in.)

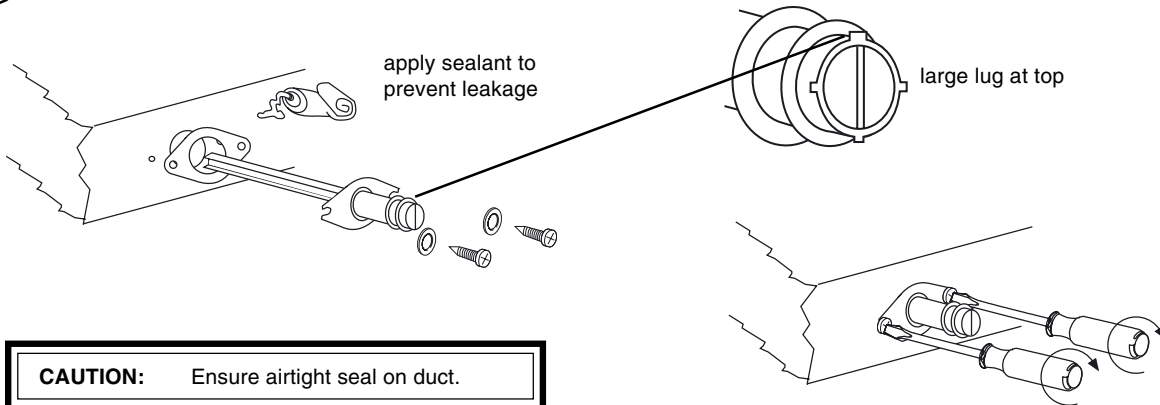


2

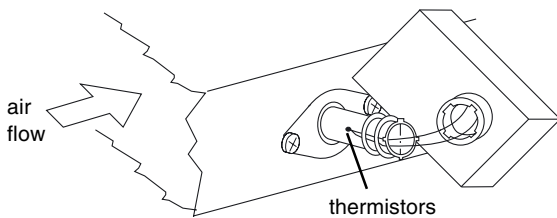
### Drill Holes in Duct, mm (in.)



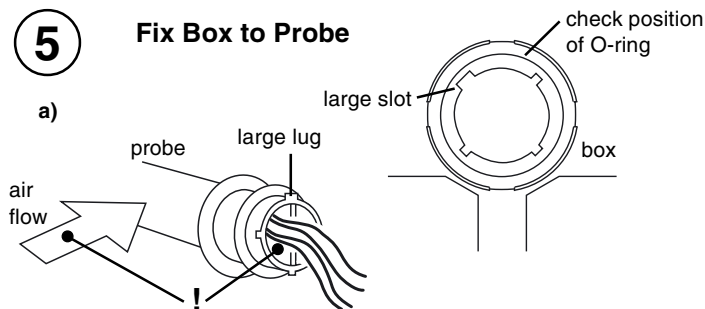
### 3 Fit Probe into Duct



### 4 Insert Thermistors into Probe

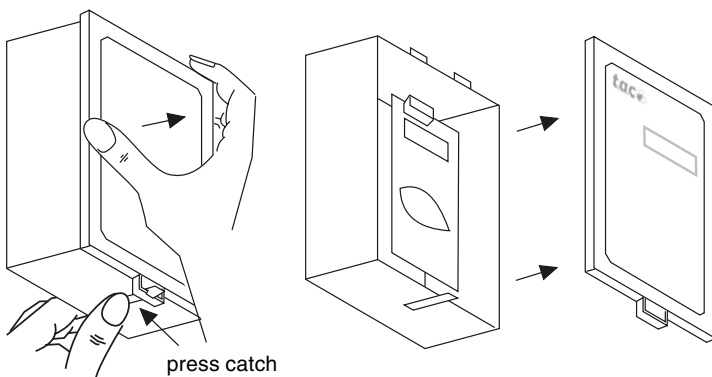


### 5 Fix Box to Probe



**CAUTION:** Ensure probe fixed to box properly for airtight seal.

### 6 Remove Lid

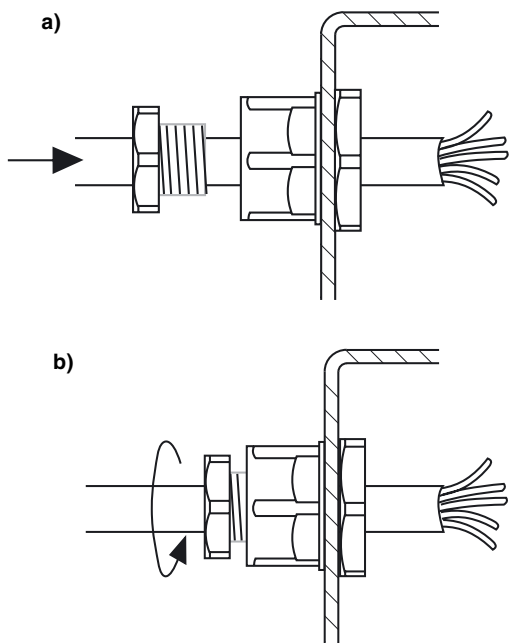


#### CAUTION

**Equipment Damage Hazard**  
Electrostatic discharge can short equipment circuitry.

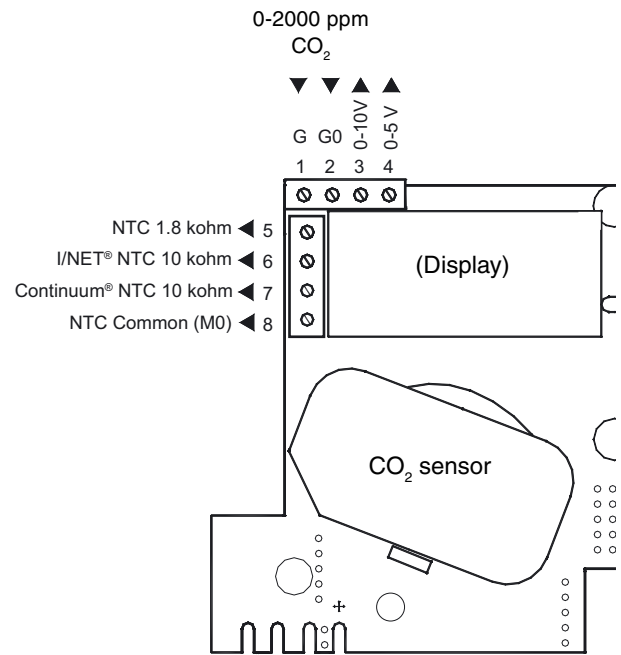
Ensure that you are properly grounded before handling the unit.

**7** Insert Cable(s)



**CAUTION:** Ensure gland tightened properly for airtight seal.

**8** Power Supply and Sensor(s) Connect

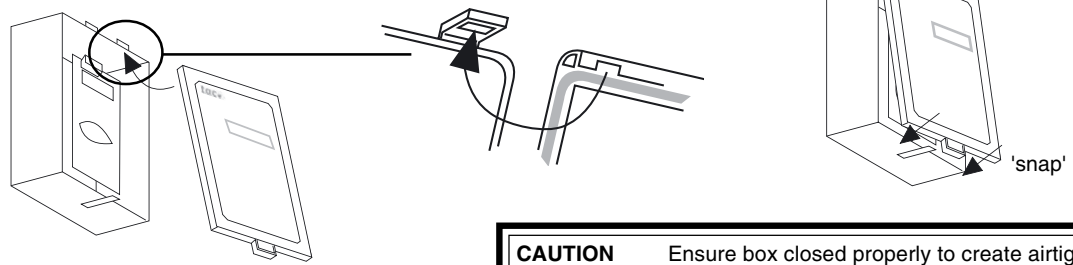


**CAUTION**  
**Electrical Shock or Equipment Damage Hazard.**  
**Can shock individuals or short equipment circuitry.**  
 Disconnect power supply before installation.

**Important**

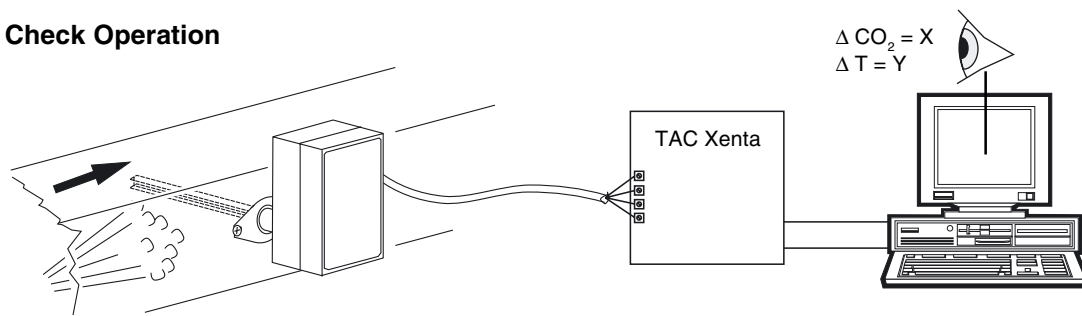
- All low voltage connections to this device must be 24 VAC Class 2.
- All wiring must comply with applicable local codes, ordinances and regulations.

**9** Replace Cover



**CAUTION** Ensure box closed properly to create airtight seal.

**10** Check Operation



Trademarks and registered trademarks are the property of their respective owners.  
TAC Vista®, TAC Menta®, TAC Xenta® and I-talk® are registered trademarks of TAC AB. LonMark® and LonWorks® are registered trademarks of the Echelon Corporation.  
Windows® is a registered trademark of Microsoft.

[www.tac.com](http://www.tac.com)